

**BAUPARTNER**  
GROUP OF COMPANIES



# **BAUPARTNER GROUP OF COMPANIES**

**THE RIGHT PARTNER.**

**ACHIEVING SUCCESS  
THROUGH COLLABORATION**

BAUPROJEKT

BAUELEMENTE

BAUPARTNER CONSTRUCT

BAUPARTNER BAUTECHNIK

NEARLY  
**4.000.000 M<sup>2</sup>** BUILT  
AND WE'RE NOT  
STOPPING **THERE!**

---

### **THE RIGHT PARTNER**

We are committed to delivering quality, value and satisfaction to our clients and partners. We aim to develop strong and trusted partnerships in close collaboration with our clients, designers, engineers, contractors and suppliers.

Through our complete services, we are able to see through the construction of a wide range of buildings. With more than 20 years of experience on the Romanian market, we are professionals in design and Construction and we're dedicated in what we do:

TRANSFORMING  
OUR CLIENTS'  
IDEAS AND  
**PROJECTS**  
INTO REALITY.

# BAUPARTNER GROUP OF COMPANIES



## ABOUT US

### MORE THAN A CONSTRUCTION COMPANY. THE RIGHT PARTNER FOR YOU!

#### WHO WE ARE

-

The BAUPARTNER group of companies is your construction partner, offering integrated solutions for large and small companies, supporting clients through to implementing their projects.

TURNKEY PROJECTS using design&build integrated services

#### AREAS OF EXPERTISE



INDUSTRIAL



LOGISTIC



RESIDENTIAL



COMMERCIAL

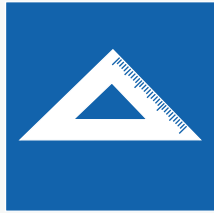
#### WHAT WE CAN OFFER

-

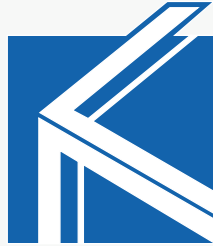
KNOW-HOW

RELIABILITY AND FAIRPLAY

INTEGRATED SOLUTIONS



BAUPROJEKT



BAUELEMENTE



BAUPARTNER  
CONSTRUCT



BAUPARTNER  
BAUTECHNIK

---

EACH COMPANY IN THE  
GROUP IS ABLE TO OFFER  
**ALL OUR SERVICES**  
INDIVIDUALLY, ALLOWING  
YOU TO SELECT WHAT  
**SUITS YOU BEST.**

---

# BAUPROJEKT

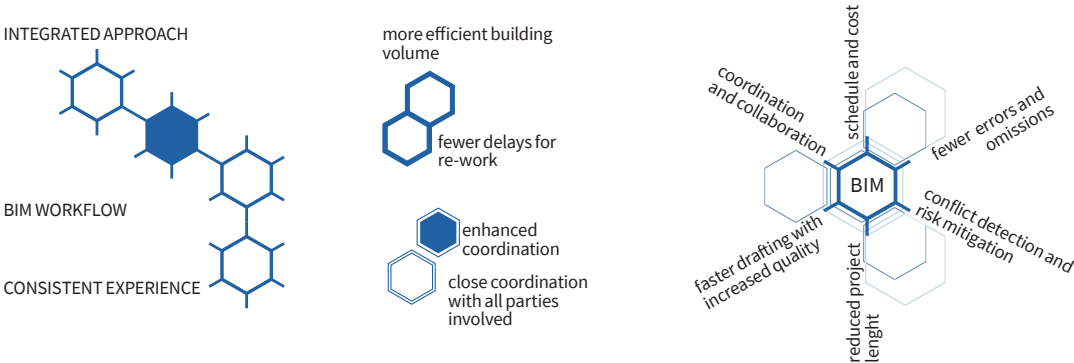


## INDUSTRIAL PROJECTS ARE A CLASS OF ARCHITECTURAL DESIGN ALL OF THEIR OWN.

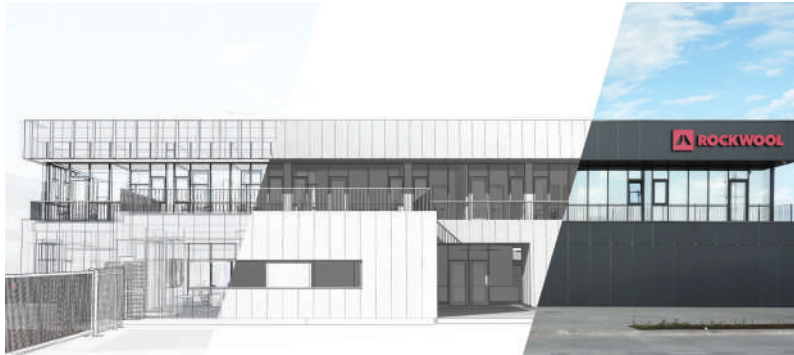
Bauprojekt operates in the field of design, architecture, engineering, consulting and coordination. Our areas of expertise cover various types of projects, such as logistics, offices, commercial or residential and mixed-use. The key attributes of our company are its integrated approach, consistent experience and BIM workflow.

### TARGET

Efficiency	Big or small, we treat every project with the same attention and importance. Your satisfaction as our client is invaluable to us. We focus on fulfilling your brief and requirements by delivering high-quality, cost-effective solutions.
Process	With an emphasis on a collaborative design process, we always aim to have an integrated approach to design and engineering. We involve our network of specialists in all the steps of a project. This allows both architects and engineers to be involved from the very beginning, improving coordination through all the phases of the design process.
BIM	BIM is the standard to planning and technological development of spatial design, for better coordination between all parties. Our work is highly collaborative, meaning that the design, engineering and execution are all interconnected.



# FROM BIM TO REALITY



## KEY ASSETS

**Integrated approach:** We know how to combine art & engineering to incorporate usability and aesthetics into your Industrial Projects.



**Solid experience:** Industrial design has a unique combination of art and engineering; drawing skills, creativity and technical knowledge.



## BIM Workflow:

Coordination and collaboration, cost and schedule optimization, conflict detection and risk mitigation, faster drafting in better quality and reduced project length.

# BAUELEMENTE



## PRECAST-PRESTRESSED CONCRETE STRUCTURES

We offer integrated design&build solutions to meet all your needs for structural project, including shell and core building systems.

The production lines in our factories are versatile and cross compatible.

## FIELDS OF ACTIVITY

Quality production  
and assembly

Quality is ensured through a wide range of molding machines and automated processing lines, specially designed for precast concrete production.

High end  
performance  
design

The prestressing process removes the design limitations of conventional concrete in terms of span, load and fire proofing. The company's design team is highly specialized, having an extensive experience in the field. It is one of the largest and highest achieving design teams in Romania.

Construction  
speed

Using precast-prestressed concrete parts helps architects and engineers to build faster, safer, and in a more effective way.

Wide product  
range

Besides our high-end solutions for precast concrete items used in civil and industrial buildings, we also specialize in producing parts for agriculture and road infrastructure systems.

## CONCRETE SOLUTIONS FOR CONCRETE RESULTS



Team with over 20  
years' experience



Named market leader  
in Romania by Precast  
Concrete Market  
Romania 2020 Interbiz



3 factories in Romania



Production capacity  
of more than  
800,000 m²  
per year



Over 200 satisfied and  
return clients



Structure or shell and  
core service



# CONCRETE SOLUTIONS

SIBIU

PLOIESTI

BUCHAREST



## OUR FACTORIES

### Ploiesti - Aricestii Rahtivani

Our first factory was built in 2007, and it has undergone several extensions since.

In 2015 we completed on a new factory dedicated to producing prestressed concrete poles for agriculture, in order to diversify the product range.



### Bucharest - Bolintin Deal

The factory is located near the A1 highway, serving the area around Bucharest and the south-east of Romania. It was extended, completely refurbished and modernized in 2019.



### Sibiu - Cristian

Our facility in Sibiu provides precast, prestressed items for our projects in the north-west of the country. In 2018, it was also extended and completely refurbished.

# BAUPARTNER CONSTRUCT



## GENERAL CONTRACTOR

Since 2008, we have been turning projects into reality, from residential and office buildings to retail and even industrial and logistics facilities for the biggest names in Romania.

## FIELDS OF ACTIVITY

Turnkey services	Our experience is the key. It starts with project preparation, price estimates and scheduling and goes all the way through to building site facilities and on-site support during the build. We are there to advise clients right from the early design phase. Together, we optimize construction and operating costs and minimize risks.
Civil and Industrial construction.	Know-how in Construction and Project Development are the key to accomplishing large, complex projects for both national and international customers with high quality expectations.
Engineering and coordination	Small and large-scale developments require strong partnerships with a wide array of experts and engineering professionals. Their experience in the field ensures that the work is carried out and delivered on time.

## KEY ASSETS



Turnkey solutions



On-time delivery,  
fast turnaround



Competitive costs



Strong partnership



Solid experience



Proven reliability

# YOUR NEED IS OUR MISSION



## **Great people**

Thanks to the hard work and commitment of our specialists, workers, experts, engineers, contractors and collaborators, we are one of the most renowned construction companies in Romania. Together with our clients, we've built an unbeatable network.

## **Stable and efficient construction processes down to professional managing of resources**

## **Reliability on deadlines, costs and quality**

We are used to tight deadlines and fast turnarounds. That is why our teams of professionals plan everything in detail. No matter what challenges we face, together we will find the best solution so that requirements are met to a high standard.

## **Partnership based on trust**

Loyalty, partnership, respect - we incorporate this into everything we do. Our return clients prove this. Year after year and project after project, we improve and develop.

# BAUPARTNER BAUTECHNIK



## EARTHWORK, EXCAVATION AND DEMOLITION AT ANY SCALE

Our mission is to offer solutions with high-performance construction equipment. We shift earth, demolish and lease various construction equipment, from mini excavators to tower cranes.

### FIELDS OF WORK

Baupartner Bautechnik's capacity to lease equipment as well as to do the works is a fundamental advantage for many of our clients.

Earthwork	Our work include topsoil removal, soil grading, backfilling, landscaping, paving and building roads.
Excavation	Our professional excavators are used on building foundations, reservoirs and roads.
Demolition	Our extensive experience allows us to complete any large or small-scale demolition in a safe and efficient manner.
Supply	The extensive inventory of specialized equipment is kept up to date in order to provide you with reliable and efficient machines.

## BAUTECHNIK KNOWS HOW TO GET THE JOB DONE



Celebrating over 20  
years of service



Up-to-date  
equipment



Proven track  
record in the market



Solid industry  
relationships



High safety standards



# ALWAYS ON THE GROUND



## KEY ASSETS

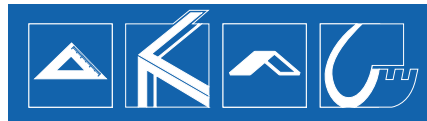
### Earthworks and demolition work:

We aim to provide you with the leading services on the market. We comply with your project terms and special requests to reach the desired results in a safe and efficient way.

### Wide range of construction equipment:

Our range of rentals is tailored to your individual requirements and covers wheeled and crawler excavators, front loaders, compaction rollers, cranes and trailers. Whether your business involves residential, commercial or industrial constructions, heavy excavation or road building, our modern fleet of machines makes us able to accommodate your needs quickly.

**BAUPARTNER**  
GROUP OF COMPANIES



## CLIENTS AND PARTNERS

---

**EMAG**

**Haier**

**Kaufland**

**ONEPI**  
NEW EUROPE PROPERTY INVESTMENTS PLC

**PLOIEȘTI WEST PARK**  
an ALINSO GROUP development

**LEMET®**

**BRITISH AMERICAN  
TOBACCO**

**WDP**  
WAREHOUSES WITH BRAINS

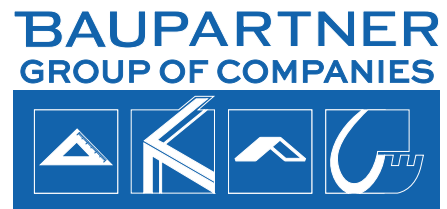
**LEROY MERLIN**

**cora**

**ctp**

**LIDL**



## SELECTED WORKS

---



---

THE SAME  
**DEDICATION AND  
ENTHUSIASM**  
REGARDLESS OF  
THE **PROJECT**  
FUNCTION  
AND SIZE

# EMAG's 1ST WAREHOUSE

eMAG is a pioneering Romanian company and the market leader in the e-commerce. The company has been continuously investing in technology-based services developed in Romania that save time and add value for their customers.

## GENERAL INFORMATION

-

**Function:**

Logistics

**Area:**

125.424 m<sup>2</sup>

**Location:**

Joita, GR, Romania

**Client:**

EMAG Logistica

**Status:**

Built

**Year:**

2017-2018

## TASKS

-

General designer and general contractor



## THE WAREHOUSE

### About:

This large-scale logistics facility is situated close to the A1 highway, near Bucharest. In an expression of the values and the motto of the company – “online will always be easier”, the building has become the interface between the virtual and the physical world. It houses all logistics-sector activities and gives special attention to the social and interaction spaces for all the workers. Both the design and building stages took just one year to complete.



# HAIER

Haier Europe is part of Haier Smart Home, the number one group globally in home appliances and among the Fortune Global 500 Companies. Haier Smart Home is present in all 5 continents with 25 industrial parks, 10 research and development centers and approximately 100,000 employees.

## GENERAL INFORMATION

-

**Function:**

Production

**Area:**

57.500 m<sup>2</sup>

**Location:**

Ariceştii Rahtivani, PH, Romania

**Client:**

HAIER TECH

**Status:**

Built

**Year:**

2020

## TASKS

-

General designer and general contractor





## THE FACTORY

-

### About:

The new factory will employ nearly 800 people – at full capacity – for an expected production of 600,000 units after 2022. The factory design, which is based on modular approach, will allow an expansion up to 1 million units at full capacity. The Romanian plant is a world-class facility featuring premium production processes brought by Haier's advanced R&D, manufacturing capabilities and know-how. Its strategic central location, technology and efficiency will enhance Haier's ability to serve customers in the region.



# PROMENADA FESTIVAL SHOPPING CITY SIBIU

Festival Shopping City Sibiu is a shopping mall located near the historic center of Sibiu.

## GENERAL INFORMATION

-

**Function:**

Retail

**Area:**

132.700 m<sup>2</sup>

**Location:**

Sibiu, SB, Romania

**Client:**

Festival Shopping Center

**Status:**

Built

**Year:**

2018-2019

## TASKS

-

Design and build of structure  
and building envelope





## THE SHOPPING CENTER

-

### About:

With 42.500 m<sup>2</sup> gross lettable area and 145 tenants, the shopping center only opened in 2019. The building is quite remarkable, with its playful facade and green roof promenade. Bauelemente had the opportunity to showcase its services by taking charge of the design and building the structures and enclosures.



# DECATHLON

Decathlon is a French sporting goods retailer. With over 2080 stores in 56 countries, it is the largest sporting goods retailer in the world. Decathlon is dedicated to helping, inspiring and guiding their clients through their sports-related purchases.

## GENERAL INFORMATION

-

**Function:**

Logistics

**Area:**

33.000 m<sup>2</sup>

**Location:**

Stefanestii de jos, IF, Romania

**Client:**

Decathlon, WDP Development

**Status:**

Built

**Year:**

2016-2017

## TASKS

-

General designer and general contractor





## THE LOGISTICS FACILITY

-

### About:

The logistics building, consisting of a warehouse and a distribution center, is located close to A3 Highway. The importance given to the social and administrative spaces through design has translated into a user-friendly building that prompts people to work better and communicate to obtain the best results. Throughout the process, from design to build, our companies proved once again that a collaborative approach and integrated design are the best way to meet the client's needs.



# ADEPLAST

AdePlast is the largest Romanian manufacturer of building materials, with four industrial platforms in Oradea, Ploiești, Roman and Ișalnița. Adeplast is the country leader and well recognised across Europe.

## GENERAL INFORMATION

-

**Function:**

Production hall

**Area:**

10.800 m<sup>2</sup>

**Location:**

Ișalnița, DJ, Romania

**Client:**

Adeplast

**Status:**

Built

**Year:**

2018

## TASKS

-

General contractor



## THE FACTORIES

-

### About:

Over the years, Baupartner Group has had several contracts with Adeplast. The most notable works include:

- 10.800 m<sup>2</sup>, mortar and expanded polystyrene production hall in Isalnita
- expanded polystyrene factory (phase III) and 1.910 m<sup>2</sup> paint factory, in Ploiesti,
- 4.200 m<sup>2</sup> dry mortar factory and a 2.500 m<sup>2</sup>, expanded polystyrene production hall in Roman





# VULCAN RETAIL PARK

NEPI Rockcastle is the premier owner-operator of shopping centers in Central and Eastern Europe (CEE) and are present in nine countries. NEPI - New Europe Property Investment developed a new retail park of approximately 28.390 m<sup>2</sup> on the site of the former Vulcan factory in Bucharest.

## GENERAL INFORMATION

-

**Function:**

Services

**Area:**

29.000 m<sup>2</sup>

**Location:**

Bucharest, Romania

**Client:**

NEPI

**Status:**

Built

**Year:**

2014

## TASKS

-

Structural design and general contractor, without the installations



## THE SHOPPING CENTER

### About:

Vulcan Retail Park will serve the southwestern part of Bucharest, being designed to meet the needs of about 395,000 residents around it - the equivalent of a 30 minutes drive. The concept included building a Hypermarket and Gallery, a Strip Mall and a drive through fast food restaurant, all constructed at ground floor level around a central 874-bay car park.



# GARTEN RESIDENZ

Garten Residenz is a real estate complex, located in Strejnicu, Prahova, with a total of 72 units. This residential project provides 5 types of houses that are united in their diversity.

## GENERAL INFORMATION

-

**Function:**  
Residential

**Area:**  
6.000 m<sup>2</sup>

**Location:**  
Strejnicu, PH, Romania

**Client:**  
Rombel Residence

**Status:**  
Built

**Year:**  
2019

## TASKS

-

General designer and general contractor  
Investor, Developer





## THE LUXURY RESIDENTIAL COMPLEX

### About:

The newest and most ambitious housing project in Ploiesti, Garten Residenz, is a complex of houses located on the Western Belt of the city, in Strejnicu. Baupartner Construct, as general contractor, coordinated the project's entire implementation.



# METRO

Metro AG is the leading international wholesaler and retailer. The distinctive business concept is oriented towards helping professional customers to successfully run their own businesses.

## GENERAL INFORMATION

-

**Function:**

Logistic

**Area:**

55.000 m<sup>2</sup>

**Location:**

Stefanestii de Jos, IF, Romania

**Client:**

WDP Development

**Status:**

Built

**Year:**

2019

## TASKS

-

General contractor





## THE LOGISTICS FACILITY

-

### About:

The logistics warehouse developed by WDP for Metro Cash & Carry in the north of Bucharest includes both a storage area without temperature control, as well as one with cooling and freezer for food distribution. Together with Metro and WDP, we contributed to the construction of the logistics center. We are proud to have been given the opportunity to take on the role as general contractor and to rise to all the challenges that arose throughout the project.



# RONDOCARTON

Rondocarton is a Romanian company within the Austrian group, Rondo Ganahl. Its business is centred around manufacturing corrugated board packaging products and corrugated case material and a range of paper and packaging.

## GENERAL INFORMATION

-

**Function:**

Production hall

**Area:**

17.000 m<sup>2</sup>

**Location:**

Targoviste, DB, Romania

**Client:**

Rondocarton

**Status:**

Built

**Year:**

2006

## TASKS

-

Design and general contractor



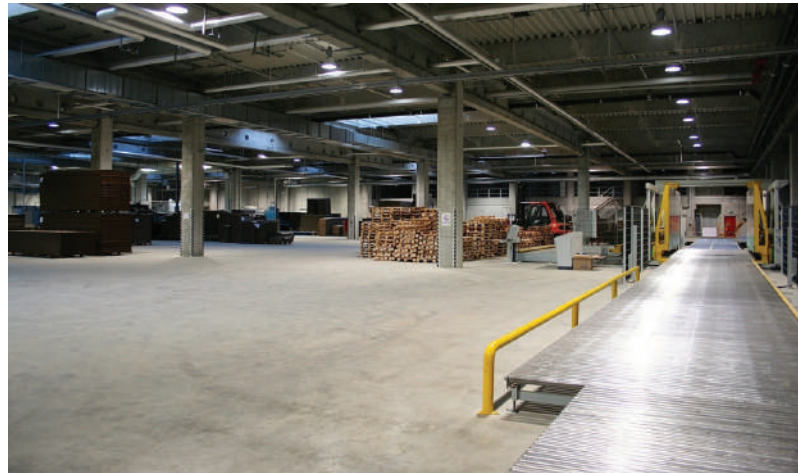


## THE FACTORY

-

### About:

This factory in the metropolitan area of Targoviste was opened in 2008 and uses the latest technologies and the best-trained employees to produce the full range of high-quality corrugated packaging. Baupartner helped expand the Rondo production network in Romania and was involved as general contractor on the design & build process.



# LEMET

The Lemet company has been founded in 1991 in Câmpina. Since then, it has gone through all the stages of evolution in order to become a solid and promising company. It currently has 70 stores with 72,000 sqm of exhibition space and about 900 employees.

## GENERAL INFORMATION

-

**Function:**

Logistics

**Area:**

5.000 m<sup>2</sup>

**Location:**

Brebu, PH, Romania

**Client:**

LEMET

**Status:**

Built

**Year:**

2012

## TASKS

-

Structural design and general contractor



## THE PRODUCTION HALL

-

### About:

The building part added in 2012 was needed for a smooth development process. With the help of the production lines that have been modernized in recent years, a piece of chipboard can be processed and be ready for assembly in seconds.





# SAIPEM

Saipem is a world leader in engineering and drilling and in developing major projects in the energy and infrastructure sectors.

## GENERAL INFORMATION

-

**Function:**

Industrial, Office

**Area:**

14.000 m<sup>2</sup>

**Location:**

Aricestii Rahtivani, PH, Romania

**Client:**

SAIPEM

**Status:**

Built

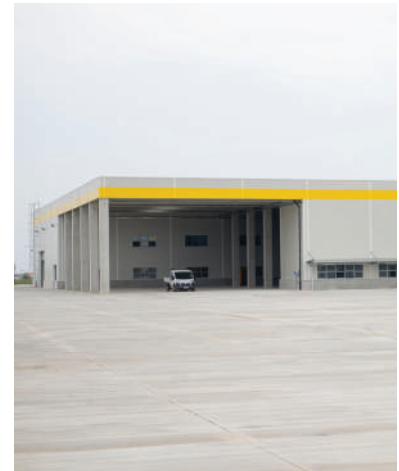
**Year:**

2015

## TASKS

-

General design and general contractor



## THE PRODUCTION HALL

-

### About:

The Romanian division of Saipem needed a unit to process transport pipelines for crude oil and natural gas, with its administrative headquarters also located on the same site. Annexes, roads and footpaths, parking spaces, platforms, fencing and connections were also part of our construction job, covering everything from earthwork to internal finishes and external fittings.



## CUBIC CENTER

Cubic Center is a beautifully designed and well-equipped class A office building located in the Pipera business area of Bucharest. The contemporary facilities in high quality, modern design with generous open spaces offer the perfect working environment.

### GENERAL INFORMATION

-

**Function:**

Office

**Area:**

30.000 m<sup>2</sup>

**Location:**

Bucharest, Romania

**Client:**

Cubic Center

**Status:**

Built

**Year:**

2007

### TASKS

-

General contractor





## THE OFFICE BUILDING

-

### About:

Located in the Pipera business area of Bucharest, the building provides 30.000 m<sup>2</sup> of class A office space divided into 12 floors. Underground parking is over 3 floors. The structure consists of reinforced concrete columns, flat slabs and central cores. Cubic Center was built using a traditional in-situ structural system. It is one of the iconic works in our portfolio.



## BAUPARTNER HQ

The headquarters of the Baupartner Group offer a high-class, innovative working environment its employees. Its “raw” architectural style showcases our day-to-day work to our clients and visitors.

### GENERAL INFORMATION

-

**Function:**

Office

**Area:**

1.000 m<sup>2</sup>

**Location:**

Aricestii Rahtivani, PH, Romania

**Client:**

Baupartner SRL

**Status:**

Built

**Year:**

2016

### TASKS

-

General design and general contractor



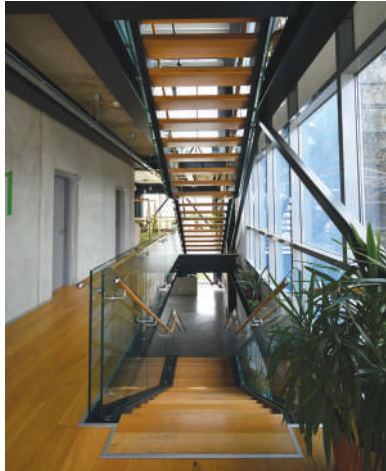


## THE HEADQUARTERS

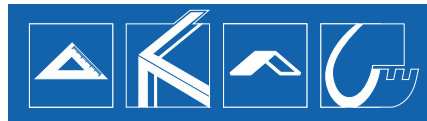
-

### About:

The office building is situated close to Ploiesti and it was designed to accommodate all the companies of Baupartner Group. The interior design reflects the specific materials produced by the companies in their rough form: exposed concrete, visible metallic structures and formwork.



# BAUPARTNER GROUP OF COMPANIES



## PORTFOLIO

**2020-2019**

**3,724,257 m<sup>2</sup>**

### PROJECTS

### AREA

### FUNCTION

### ROLE

"Alcar" warehouse in Ștefăneștii de Jos for WDP

9,800 m<sup>2</sup>

warehouse

general contractor

"Aggreko" warehouse in Ștefăneștii de Jos for WDP

2,800 m<sup>2</sup>

warehouse

general contractor

DECATHLON warehouse extension in Ștefăneștii de Jos

10,434 m<sup>2</sup>

warehouse

general contractor

eMAG logistics unit in Joița - Giurgiu

129,690 m<sup>2</sup>

logistics

general contractor

HAIER refrigerator factory in Ariceștii Rahtivani

57,500 m<sup>2</sup>

production

designer & general contractor

LIDL logistics center in Cernica

62,180 m<sup>2</sup>

logistics

precast elements

PIRELLI warehouse in Slatina (phase II)

63,755 m<sup>2</sup>

production

precast elements

Warehouse in Șura Mică for RARA LOGISTIC

6,880 m<sup>2</sup>

warehouse

precast elements

Shopping center in Sf. Gheorghe for SEPSI

20,300 m<sup>2</sup>

retail

precast elements

Warehouse in Ștefănești for BRIOTHERM XPS

3,600 m<sup>2</sup>

logistics

precast elements

Car Trans Truck Service, warehouse and administrative section in Ploiești

2,750 m<sup>2</sup>

warehouse

precast elements

SAMEDAY logistics center in Chitila for EMAG

27,000 m<sup>2</sup>

logistics

designer & general contractor

Elemaster warehouse in Băiculești for E-RES REAL ESTATE & ENERGY

10,570 m<sup>2</sup>

production

precast elements

"Promenada Festival Shopping City Sibiu" for FESTIVAL SHOPPING CENTER

132,700 m<sup>2</sup>

retail

structures and building envelope



## 2019-2017

PROJECTS	AREA	FUNCTION	ROLE
Production hall in Filipeștii de Pădure for LTEN PROJECTS IND SRL	5,115 m <sup>2</sup>	production	precast elements
PIRELLI warehouse in Slatina (phase I)	29,580 m <sup>2</sup>	production	precast elements
"Garten Residenz" luxury residential complex in Strejnicu for ROMBEL RESIDENCE	6,000 m <sup>2</sup>	residential	general contractor
"Targu Mures Shopping City" for TARGU MURES SHOPPING	56,000 m <sup>2</sup>	retail	structures&building envelope
CARREFOUR logistics extension in Ștefăneștii de Jos for WDP	7,259 m <sup>2</sup>	logistics	general contractor
"LPP Fashion" logistics center in Ștefăneștii de Jos for WDP	22,000 m <sup>2</sup>	logistics	general contractor
"Metro Cash & Carry" logistics center in Ștefăneștii de Jos for WDP	55,000 m <sup>2</sup>	logistics	general contractor
ADEPLAST mortar and expanded polystyrene production hall in Ișalnița	10,800 m <sup>2</sup>	production&warehouse	general contractor
Production hall and warehouse in Satu Mare for ALU MENZIKEN	20,700 m <sup>2</sup>	production&warehouse	general contractor
Production hall and warehouse in Dâmbovița for CURENT METAL	12,200 m <sup>2</sup>	production&warehouse	precast elements
Warehouse in Dragomirești for E-RES REAL ESTATE & ENERGY	18,096 m <sup>2</sup>	logistics	precast elements
Eurobody logistics center in Dragomirești for E-RES REAL ESTATE & ENERGY	30,706 m <sup>2</sup>	logistics	precast elements
eMAG warehouse and office building in Joița - Giurgiu	125,424 m <sup>2</sup>	warehouse	designer & general contractor
Warehouse and office building in Dragomirești for EPSTAIN	8,230 m <sup>2</sup>	warehouse	precast elements
Bosch warehouse in Blaj for KARL HEINZ DIETRICH	22,000 m <sup>2</sup>	warehouse	structures, finishings & platforms
Logistics center extension in Codela for WDP	3,500 m <sup>2</sup>	logistics	general contractor
Production hall and warehouse in Ariceștii Rahtivani for ALINSO	20,790 m <sup>2</sup>	production&warehouse	structure & exterior works
Production hall and warehouse in Ariceștii Rahtivani for ALINSO	8,900 m <sup>2</sup>	production&warehouse	structure & exterior works
LIDL logistics center in Cordun for CONCRETE CONSTRUCT AG	44,000 m <sup>2</sup>	warehouse	precast elements
"Râmnicu Sărat Value Centre" for DEROM TOTAL	7,500 m <sup>2</sup>	retail	precast elements
"Sebeș Retail Park" for DEROM TOTAL	3,200 m <sup>2</sup>	retail	design & execution of structures
Logistics center extension in Bolintin Deal for H.ESSERS INVESTITII	25,000 m <sup>2</sup>	logistics	structures and sewagenetworks
Production hall and warehouse in Sibiu for IMPLENIA BAUGESSELLSCHAFT M.B.H	13,410 m <sup>2</sup>	production	structures and building envelope
"Otopeni West Park 14" for KARL HEINZ DIETRICH	10,600 m <sup>2</sup>	warehouse	design & execution of structures
Lem's showroom in Ploiești for LEMET	9,000 m <sup>2</sup>	showroom	general contractor
Warehouse in Târgu Mureș for MAPCOM	8,800 m <sup>2</sup>	warehouse	precast elements
Production hall and warehouse in Râmnicu Vâlcea for MINET	12,800 m <sup>2</sup>	warehouse	general contractor

2017-2016

PROJECTS	AREA	FUNCTION	ROLE
"Shopping City Galați" for NEPI	27,480 m²	retail	structures and building envelope
"Universal Negoiu Făgăraș - Mall" for PK RED	3,150 m²	retail	general contractor
"Focșani Mall" for PK RED	6,100 m²	retail	general contractor
"Târgu Secuiesc Retail Park" for PK RED	3,300 m²	retail	general contractor
Paper roll production hall in Bucharest for ROMCARTON	42,000 m²	production	structures and building envelope
Paper roll production hall in Târgoviște for RONDOCARTON	9,900 m²	production	general contractor
Paper roll production hall extension in Târgoviște for RONDOCARTON	15,000 m²	production	general contractor
CARREFOUR logistics center in Ștefănești de Jos for WDP	11,000 m²	logistics	general contractor
Warehouse extension in Râmnicu Vâlcea for WDP	4,800 m²	warehouse	general contractor
Skating rink in Otopeni for AGRO TERRA SOL INVEST	3,700 m²	skating rink	precast elements
Production hall in Ariceștii Rahtivani for ALINSO	9,900 m²	logistics	general contractor, except for MEP
Automotive supplier production hall & office building in Ariceștii Rahtivani for ALLIANSO	2,200 m²	production&office	general designer
Restaurant in Allianso Park, Ariceștii Rahtivani for ALLIANSO	577 m²	services	general designer
Rebar cutting and bending factory in Ploiești for ARTSANI	3,000 m²	production	design & execution of structures
Baupartner Group headquarters extension in Ariceștii Rahtivani for BAUPARTNER	600 m²	office building	designer & general contractor
CARREFOUR shopping center extension in Brașov	4,900 m²	retail	structures and building envelope
Warehouse and distribution center in Ștefănești for CARREFOUR	11,000 m²	logistics	designer & general contractor
Logistics center extension in Ariceștii Rahtivani for IMMOFINANZ	15,000 m²	logistics	structural design & general contractor
"Otopeni West Park 13" logistics center and offices for KARL HEINZ DIETRICH	10,600 m²	logistics	design & execution of structures
Logistics center in Sibiu for KARL HEINZ DIETRICH	10,500 m²	logistics	design & execution of structures
EMET Furniture warehouse in Brebu	5,000 m²	logistics	structural design & general contractor
"Piatra Neamț Shopping City" for NEPI	38,000 m²	retail	general contractor, except for MEP
Paper roll production hall in Popești-Leordeni for ROMCARTON	34,000 m²	production	structures and building envelope
RONDO Paper roll warehouse extension in Târgoviște	1,500 m²	warehouse	general contractor
SIEPCOFAR warehouse in Chitila	7,500 m²	warehouse	structures and MEP under 0.00 level
Automotive production hall in Brăila for WDP	27,400 m²	production	designer & general contractor
Automotive production hall in Râmnicu Vâlcea for WDP	12,800 m²	production	structural design & general contractor

## 2016-2014

PROJECTS	AREA	FUNCTION	ROLE
Textile production factory in Râmnicu Vâlcea for WDP	7,955 m <sup>2</sup>	production	structural design & general contractor
Warehouse and distribution center in Ștefănești for WDP	29,500 m <sup>2</sup>	logistics	designer & general contractor
Textile factory extension in Ariceștii Rahtivani for ALINSO	10,000 m <sup>2</sup>	production	general contractor, except for MEP
Textile production factory extension in Ploiești for BIC	4,000 m <sup>2</sup>	production	design & execution of structures
Residential complex in Craiova for BUJORULUI RESIDENCE	9,100 m <sup>2</sup>	residential	general contractor
Paper production hall extension in Zărnești for ECOPAPER	5,000 m <sup>2</sup>	production	structures and building envelope
Logistics centre in Brașov for KARL HEINZ DIETRICH	10,000 m <sup>2</sup>	logistics	design & execution of structures
Logistics center in Otopeni for KARL HEINZ DIETRICH	11,000 m <sup>2</sup>	logistics	design & execution of structures
Verification of gas and drilling pipes production hall in Ariceștii Rahtivani for SAIPEM	14,000 m <sup>2</sup>	production and office	general designer & general contractor
Automotive production hall and office building in Ariceștii Rahtivani for WDP	12,000 m <sup>2</sup>	production and office	design & execution of structures
Logistics center for automotive spare parts in Codlea for WDP	5,000 m <sup>2</sup>	logistics	structural design & general contractor
LIDL warehouse in Ariceștii Rahtivani for ALINSO	10,000 m <sup>2</sup>	logistics	designer & general contractor
Warehouses in Ariceștii Rahtivani for ALINSO	13,700 m <sup>2</sup>	logistics	general contractor
Car service in Bucharest for CARS TUNING	830 m <sup>2</sup>	service	design & execution of structures
Expansion joints production hall in Ariceștii Rahtivani for DEKOMTE	4,000 m <sup>2</sup>	production	general designer
Paper production hall in Brașov for ECOPACK	5,000 m <sup>2</sup>	production	structures and building envelope
Paper manufacturing hall in Zărnești for ECOPAPER	14,000 m <sup>2</sup>	production	structures and building envelope
Residential buildings in Volunatri for HIGH TECH CLIMA	2,500 m <sup>2</sup>	residential	structural works & finishing works
LEMET furniture warehouse in Brebu	5,000 m <sup>2</sup>	logistics	structural design & general contractor
LEROY MERLIN DIY store in Bragadiru	13,000 m <sup>2</sup>	retail	structures and building envelope
“Vulcan Retail Park” in Bucharest for NEPI	29,000 m <sup>2</sup>	retail	general contractor, except for MEP
“Timișoara Shopping City” for NEPI	38,000 m <sup>2</sup>	retail	general contractor, except for MEP
Garment production hall in Urlați for OSTAZAR	5,000 m <sup>2</sup>	production	design & execution of structures
“Cuză Vodă” multi-story parking lot in Ploiești for CITY OF PLOIEȘTI	10,000 m <sup>2</sup>	car park	designer & general contractor
IT office building in Timișoara for SAGUARO	2,600 m <sup>2</sup>	office	general contractor
Hydraulic cylinder production hall in Ariceștii Rahtivani for WDP	8,000 m <sup>2</sup>	production	general contractor
Warehouse for WDP in Ariceștii Rahtivani, (phase I)	8,300 m <sup>2</sup>	warehouse	general contractor

## 2013-2010

PROJECTS	AREA	FUNCTION	ROLE
ADEPLAST expanded polystyrene factory expansion in Oradea	3,000 m <sup>2</sup>	production	structures and building envelope
Textile production factory in Ariceștii Rahtivani for ALLIANSO	20,000 m <sup>2</sup>	production	design & execution of structures
“Mărășești” residential building in Ploiești for BAUPARTNER	590 m <sup>2</sup>	residential	designer & general contractor
Textile production factory in Ploiești for BIC	18,200 m <sup>2</sup>	production	design & execution of structures
Biogas factory in Filipeștii de Pădure for GENESIS BIOPARTNER	1,700 m <sup>2</sup>	renewable energystation	designer & general contractor
Warehouse and Bentonite factory in Ariceștii Rahtivani for HALLIBURTON	1,800 m <sup>2</sup>	production&warehouse	designer & general contractor
OTTER shoe factory in Bucharest	3,000 m <sup>2</sup>	logistics	design & execution of structures
“MiniSat production hall” in Timișoara for PRESSAFE	4,000 m <sup>2</sup>	production	design & execution of structures
Automotive spare parts logistics center in Codlea for WDP	7,500 m <sup>2</sup>	logistics	structural design & general contractor
ADEPLAST EPS factory in Ploiești (phase III) and ADEPLAST paint factory in Ploiești	1,910 m <sup>2</sup>	production	designer & general contractor
ADEPLAST dry mortar factory in Roman	4,200 m <sup>2</sup>	production	designer & general contractor
ADEPLAST expanded polystyrene production hall in Roman	2,500 m <sup>2</sup>	production	designer & general contractor
“Cora Shopping Center” in Bucharest	55,000 m <sup>2</sup>	retail	design & execution of structures
INSPET Logistics center for oil distribution in Ploiești	7,500 m <sup>2</sup>	logistics	design & execution of structures
LEMET Furniture warehouse in Brebu	5,000 m <sup>2</sup>	logistics	structural design & general contractor
Aluminum production hall in St. Ana, Arad for MAGONTEC	5,000 m <sup>2</sup>	production	design & execution of structures
“Ploiești Shopping City” for NEPI	2,000 m <sup>2</sup>	retail	design & execution of structures
SCHLUMBERGER headquarters in Ariceștii Rahtivani	20,000 m <sup>2</sup>	office, service&logistics	design & execution of structures
Automotive production hall in Oarja for WDP	8,000 m <sup>2</sup>	production	designer & general contractor
ADEPLAST Expanded polystyrene factory in Corlătești (phases I + II)	7,850 m <sup>2</sup>	production	designer & general contractor
Production hall and logistics center in Ariceștii Rahtivani for ALLIANSO	12,500 m <sup>2</sup>	logistics & production	structures and building envelope
Plastics factory production hall in Oradea for JÁSZ PLASZTIK (phase II)	12,800 m <sup>2</sup>	production	structures and building envelope
KAUFLAND Logistics center in Turda	59,000 m <sup>2</sup>	logistics	design & execution of structures
Warehouse, workshop and office building in Ariceștii Rahtivani for LUFKIN	35,000 m <sup>2</sup>	production & office	design & execution of structures
TORO MANUFACTURING AND SALES factory in Ariceștii Rahtivani	14,000 m <sup>2</sup>	production & office	design & execution of structures
“Severin Shopping Center” in Drobeta-Turnu Severin for BELROM	49,000 m <sup>2</sup>	retail	design & execution of structures
Plastics factory production hall in Oradea for JÁSZ PLASZTIK (phase I)	12,800 m <sup>2</sup>	production	structural design & general contractor



## 2010-2006

PROJECTS	AREA	FUNCTION	ROLE
Electronic components production hall in Oradea for SHINHEUNG	35,000 m <sup>2</sup>	production	structural design & general contractor
BAT warehouse in Ariceștii Rahtivani for ALINSO	20,000 m <sup>2</sup>	logistics	design & general contractor
“Unilever” logistics center in Ariceștii Rahtivani for ALINSO	35,000 m <sup>2</sup>	logistics	design & general contractor
Sports hall for “Vocational School, No. 2” in Bucharest for BUCHAREST city hall	6,000 m <sup>2</sup>	educational	design & execution of structures
Electronic components production hall in Oradea for HANIL	26,000 m <sup>2</sup>	production	structures & building envelope
Office building in Otopeni for NOVOMATIC	17,800 m <sup>2</sup>	office	design & execution of structures
Logistics center extension in Ploiești for PLUS	15,000 m <sup>2</sup>	logistics	design & execution of structures
PRADIS office building in Ploiești	1,500 m <sup>2</sup>	office	structures and building envelope
Cellular concrete production hall in Ariceștii Rahtivani for XELLA	8,600 m <sup>2</sup>	production	design & execution of structures
“Uptown” apartments in Ploiești for ADAMA	14,000 m <sup>2</sup>	residential	general contractor
Extension of precast concrete factory in Ariceștii Rahtivani for BAUELEMENTE	4,645 m <sup>2</sup>	production	designer & general contractor
Baupartner Group headquarters in Ariceștii Rahtivani for BAUPARTNER	1,988 m <sup>2</sup>	office	designer & general contractor
“Focșani Retail Park” for BELROM	49,000 m <sup>2</sup>	retail	design & execution of structures
Service and office building in Ploiești for CAMERON	13,000 m <sup>2</sup>	offices & service	design & execution of structures
“Hotel Tiara Ploiești” extension	5,500 m <sup>2</sup>	hotel	design & execution of structures
“West Gate Center Mall” in Craiova for IMMOFINANZ	73,000 m <sup>2</sup>	retail	general contractor, except for MEP
Logistics center and offices in Ploiești for PIRITEX	14,500 m <sup>2</sup>	logistics	design & execution of structures
STAER Furniture store in Focșani	3,500 m <sup>2</sup>	retail	design & execution of structures
BAUELEMENTE pre-cast reinforced concrete elements in Ariceștii Rahtivani	12,600 m <sup>2</sup>	production	designer & general contractor
“Cubic Center” office building in Bucharest	30,000 m <sup>2</sup>	office	general contractor
KAUFLAND supermarket and headquarters in Bucharest	15,000 m <sup>2</sup>	retail & headquarters	designer & general contractor
“Edenia” apartments in Bucharest for ADAMA	25,000 m <sup>2</sup>	residential	structural & finishing works
“Titanium” apartments in Bucharest for ADAMA	6,000 m <sup>2</sup>	residential	general contractor
INTEREX supermarket in Târgoviște	4,000 m <sup>2</sup>	retail	general contractor
BMW service building and offices in Bucharest for MHS BUS & TRUCK	4,600 m <sup>2</sup>	showroom & service	general contractor
MAN service building and offices in Bucharest for MHS BUS & TRUCK	4,600 m <sup>2</sup>	showroom & service	designer & general contractor
PLUS DISCOUNT supermarket in Medgidia	1,630 m <sup>2</sup>	retail	general contractor

2006

PROJECTS

RONDOCARTON Corrugated cardboard factory in Târgoviște  
Warehouse & office building in Bucharest for SUPERFOOD

AREA

17,000 m²  
1,900 m²

FUNCTION

production  
logistics

ROLE

designer & general contractor  
general contractor

2006-2020

39 KAUF LAND supermarkets across Romania  
9 LI DL supermarkets across Romania  
8 warehouses for CTP across Romania  
7 logistic buildings for CTP across Romania

522,055 m²  
263,235 m²  
216,593 m²  
383,100 m²

retail  
retail  
warehouse  
logistic & office

design & execution of structures  
design & execution of structures  
design & execution of structures  
design & execution of structures

TOTAL BUILT AREA:

3,724,257 m²



## SUMMARY AND CONTACT

---

### A SHORT SUMMARY

Meeting your needs is our mission. We offer integrated solutions for buildings, from design and production to general operations, giving people the power to grow their business and projects.

Our mission is to improve your project by using our innovative construction methods to fulfill your needs.

### CONTACT

E: [info@baupartner.ro](mailto:info@baupartner.ro)  
P: + 40 (244) 406 751



[www.baupartnergroup.ro](http://www.baupartnergroup.ro)





WWW.BAUPARTNERGROUP.RO

# THE RIGHT PARTNER



**BAUPARTNER  
GROUP OF COMPANIES**



---

## CONTACT

Address

Baupartner Group  
str. Bruxelles 877A, Ariceştii Rahtivani  
Prahova  
Romania

Phone

+ 40 (244) 406 751

Online

Email: [info@baupartner.ro](mailto:info@baupartner.ro)

Website: [www.baupartnergroup.ro](http://www.baupartnergroup.ro)

---